



# CERTA

ELECTRIK CORPORATION



**CERTA ELECTRIK CORPORATION**

**Manufacturer & Exporter of  
Electrical Components and Accessories**

Sativali, Vasai (E), Maharashtra

MAKE CONNECTIONS SAFE & RELIABLE





**STAINLESS STEEL CLEATS**



**ALUMINIUM CLEATS**



**NONMETAL CLEATS**





## ALUMINIUM CLEATS

**CERTA** brand aluminium cable cleats are made of LM-6 cast alloy as per BS 1490 Which are designed according to IEC 61914-2009 and engineered for easy installation.

### TECHNICAL SPECIFICATION

<u>Material</u>	: LM-6 Aluminium casting alloy conformd to BS1490			
<u>Chemical Composition%</u>	Copper	0.10Max.	Magnesium	0.10Max.
	Silicon	10.0 – 13.0	Iron	0.60Max.
	Manganese	0.50Max.	Nickel	0.10Max.
	Zinc	0.10Max.	Lead	0.10Max.
	Tin	0.05Max.	Titanium	0.20Max.
	Aluminium	Remaining.		

<u>Mechanical Properties:</u>	<u>Sand Cast:</u>	<u>Chill Cast:</u>
0.2% Proof stress ( N/mm2)*	60 – 70	70 – 80
Tensile Stress ( N/mm2)*	160 - 190	190 – 230
Elongation %*	5 – 10	7 – 15
Impact Resistance Izod (Nm)	6.0	9.0
Brinell Hardness Number	50 – 55	55 – 60
Endurance Limit (5x10 <sup>7</sup> cy N/mm <sup>2</sup> )	51	68
Modulus of Elasticity (x10 <sup>3</sup> N/mm <sup>2</sup> )	71	71
Shear Strength	120	

(\* The value shown are typical ranges for sand and chill cast test bars produced to the requirements of BS1490 and for 6mm diameter die cast bars; those in heavier type are minimum specification values )

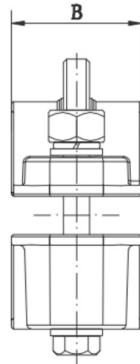
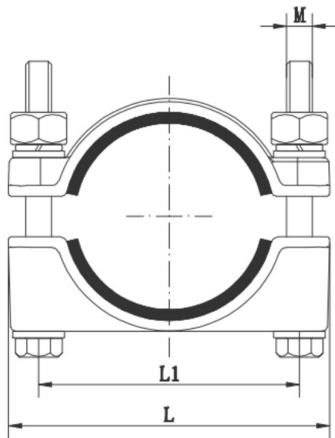
#### Strength at elevated temperatures:

Tensile strength and hardness decrease fairly regularly with increasing temperature and become relatively poor at temperatures of the order of 250 Degree C.

#### PHYSICAL PROPERTIES:

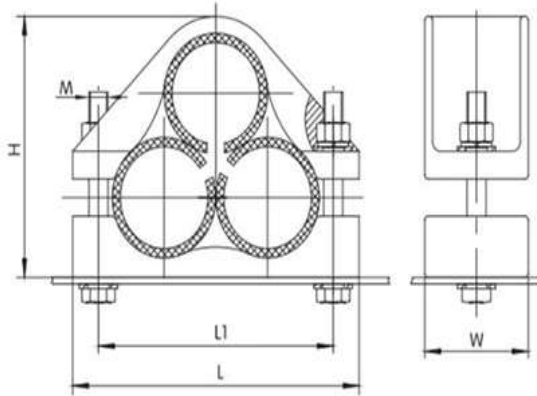
Coefficient of Thermal Expansion (per oC at 20-100oC) ..	0.000020
Thermal Conductivity (cal/cm <sup>2</sup> /cm/oC/ at 25oC) *	0.34
Electrical Conductivity (% copper standard at 20oC *	37
(* Applies to sand castings; values are approximate and will vary with condition.)	
Solidification Shrinkage (approx. %)	3.7
Specific Gravity	2.65
Freezing Range (oC) approx.	575-565

## ALUMINIUM CLEATS- DOUBLE BOLT



MODEL	CABLE -OD mm	L1	L2	L3	L4	M
JGW-01	28-45	75	105	50	65	12×80
JGW-0	45-65	95	125	50	85	12×100
JGW-1	65-85	120	155	55	105	12×110
JGW-2	80-100	130	165	55	120	12×130
JGW-3	90-110	140	175	55	130	12×130
JGW-4	100-120	155	192	62	140	12×130
JGW-5	120-140	185	222	75	170	12×150
JGW-6	140-166	195	226	80	195	12×180

## ALUMINIUM CLEATS- TREFOIL



Catalog No.	Applicable outside diameter of cable	Main dimensions(mm)				
		L	W	H	L1	M
JGP-1	45~55	180	65	135	150	12
JGP-2	55~68	224	70	156	186	12
JGP-3	68~80	274	75	186	224	14
JGP-4	80~90	288	80	205	245	14
JGP-5	90~100	332	100	235	280	16
JGP-6	100~114	342	100	252	290	16
JGP-7	114~130	352	100	265	300	16

## ALUMINIUM CLEATS- TREFOIL

Trefoil Clamps keep three single-core cables in a Trefoil arrangement, which helps maintain magnetic symmetry, thereby avoiding current loss and electromagnetic heating. Trefoil Clamps through a molding process using Virgin Glassfilled Nylon material. We mainly use Glass-filled nylon materials to increase the flexibility of the clamp & to avoid breaking the clamp from the hook during the tightening procedure of the three single-core cables.



**VARIOUS SIZES DIMENSION BETWEEN 18MM TO 160MM AVAILABLE**

